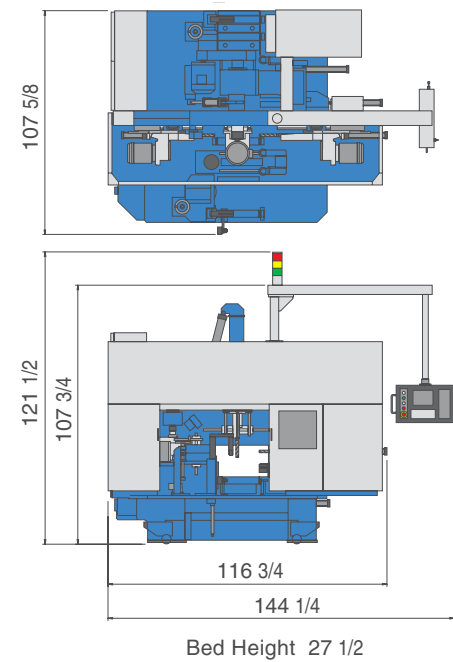


■ SPECIFICATIONS

Capacity (in)	Drilling	H-Beam	5 7/8×4~16×7
		H-Column	4 1/8×4~12 1/4×12
		Angle	2×2~8×8
		Channel	3×1 3/8~15×3 3/4
		Square Tube	1 1/2×1 1/2~16×8
		Flat Bar	3/8×2~1×12
	Cutting	H-Beam	5 7/8×4~16×7
		H-Column	4 1/8×4~6 1/4×6
		Angle	2×2~8×8
		Channel	3×1 3/8~15×3 3/4
		Square Tube	1 1/2×1 1/2~16×4
		Flat Bar	3/8×2~1×12
Drill Spindle	Axis		Left, Right, Top
	Spindle Taper	U	MT#4
		L·R	MT#3
	Hole Dia. Available (in)	U	3/8~1 9/16
L·R		3/8~1 1/16	
Blade Size(in)	Dia. × Thick.	26×0.20	
Work Feed	Measure	AC Servo Driven Pinch Roller	
	Feed Speed(fpm)	100	
	Max. Indexible Weight(lbs)	6,600	
Min. Work Length(in)	Auto Cycle	5' 1/4	
	Manual	6	
Motor Output (HP)	Saw Blade	7.5×1	
	Drill	5×3	
	Hydraulic	2×1	
	Drill Slide	0.4×3(AC Servo)	
	Work Feed Roller	1.6×1(AC Servo)	
Coolant		0.08×1	
Power Consumption(A)		49.3(208V)	
Air Compressor*	Pressure (psi)	87	
	Flow Needed(gal/min)	80	
	Min. Power(HP)	3	
Machine Weight (lbs)	13,450		
Standard Accessories	Drill Bit Dia.11/16, 7/8, 15/16 for Each Spindle Circular Saw Dia. 26×10.2 2 pc. Chip Cart, Tools 1 set		
Options	Quick Chuck Roller Table(66' length with 7 rollers) Roller Table(66' length with 20 rollers)		

- * An air compressor is not included.
 ● Specifications are subject to change without notice.
 ● Inch version machines are available.

■ OVERALL DIMENSIONS (in)

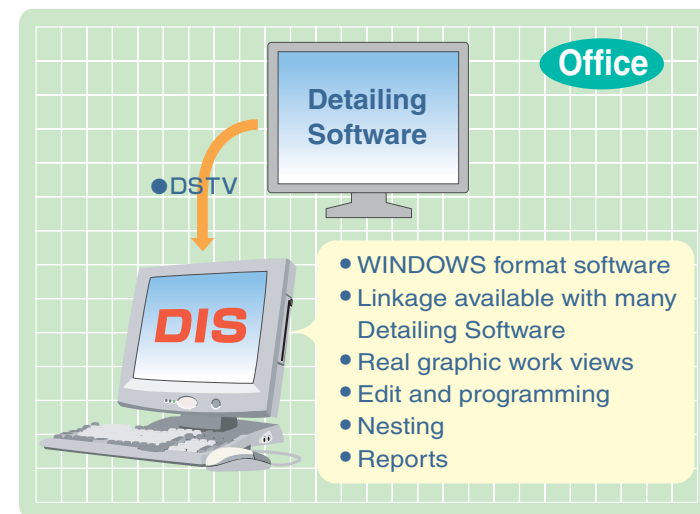


■ OPTIONS

DAITO INTERFACE STEELWARE

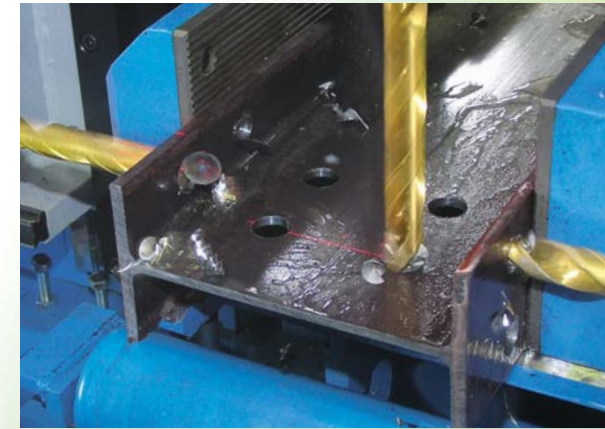
Daito's Exclusive Software

DIS software can be linked with detailing software to eliminate redundant input. Once a job is detailed by detailing software, **DIS** converts to drilling data and transfers to the drilling machine.



DRILLING & CUTTING COMBINATION MACHINE

DRILL-SAW DS400



THE SOLUTION FOR VARIOUS SMALL PROFILES!



DAITO U.S.A., INC.

1470 Elmhurst Road, Elk Grove Village, IL 60007
 TEL 847-437-6788 FAX 847-437-6789
<http://www.daitousa.com>

DRILL & SAW COMBINATION



DRILLING/CUTTING EXAMPLE

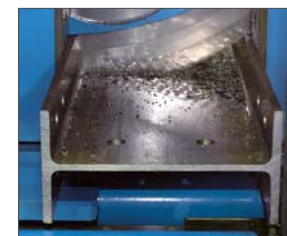
W8 x 15
6 1/2' ft length, 13/16 in hole dia.
16 holes on flanges
4 holes on web
2 cuts at both ends

TOTAL TIME NEEDED
3 min 20 sec



5 SECONDS PER HOLE

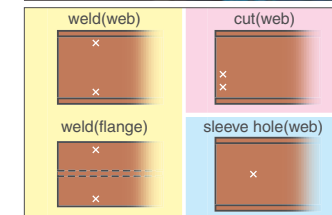
The independent drill positioning is quick and accurate; each drill is driven by powerful 5HP motor.



35 SECONDS PER CUT

The tough HSS tooth edges are not damaged by drilled chips; enabling a stable speedy cut.

MARKING BY DRILL BIT POINT



The marking for a cut, weld and sleeve hole is made by the contact of a rotating drill bit.

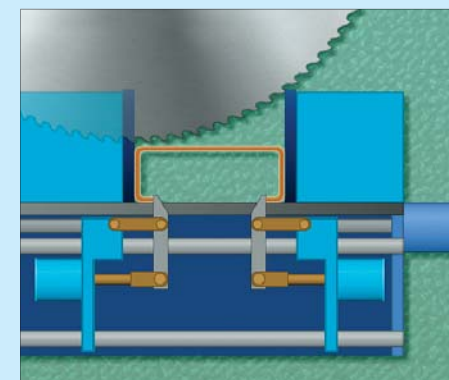
FEATURES

VARIOUS PROFILES AVAILABLE



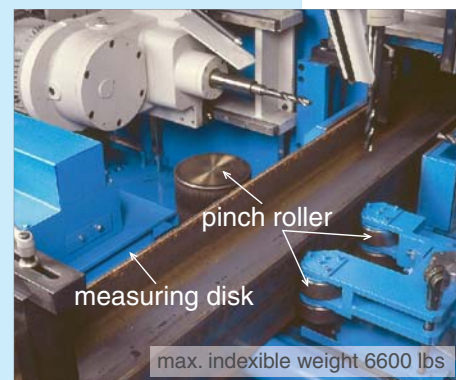
Various profiles including H beams, angles and channels are applicable. Unlike punching machines that require troublesome heavy tool changes.

ANTI-DEFORM SOLUTION



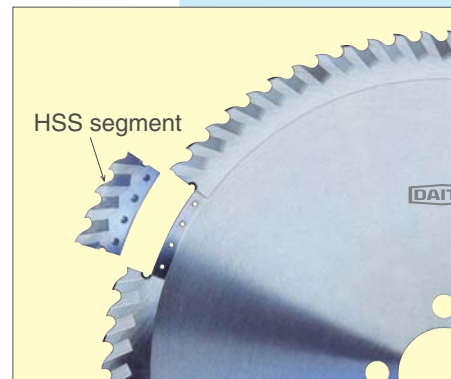
During circular saw cutting, thin wall channels are clamped with the inner vise mechanism beneath the machine bed to solve work deformation.

SPEEDY, ACCURATE WORK FEED



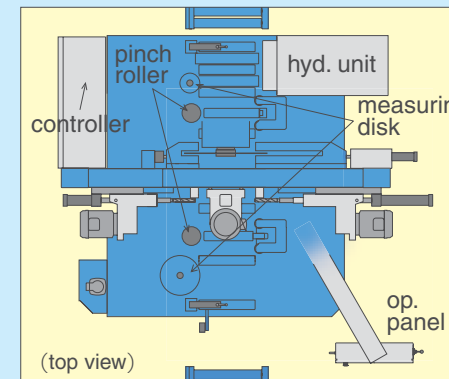
The work feed is made by the speedy pinch roller at 100 fpm. The large measuring disk of 40" circumference assures excellent accuracy.

ECONOMICAL HSS SAW



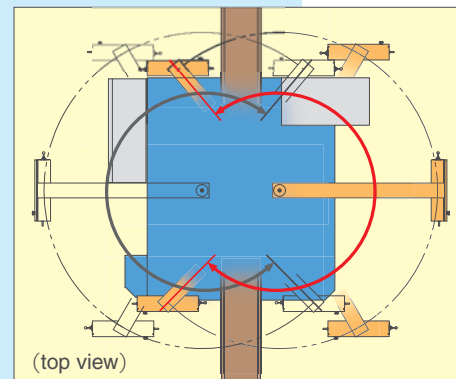
The circular saw has segmental HSS edges and can be re-sharpened over 10 times; the running cost is as economical as a band saw blade.

COMPACT ALL-IN-ONE



The machine is compact. The work feed/measurement system is built into the machine as well as the electric and hydraulic devices.

SWIVEL OPERATION PANEL



The operation panel is a pendant type that swivels a max. 265 degrees. The pivot point center can be changed after installation.

SPACE SAVING

