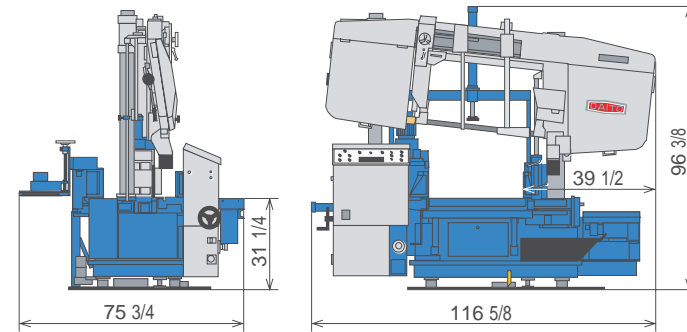


## SPECIFICATIONS

Cutting Capacity (in)	0°	□ W31 1/2 × H18 1/2 □ H19 5/8 ○ 20			
	45°	□ W15 3/4 × H19 5/8 □ H15 3/4 ○ 16 1/8			
Min. Material Length (in)	0°	Manual	12	Auto	43 1/2
	45°	Manual	35 1/2	Auto	51 1/2
Work Feed Speed (ft/min)	46				
Blade Sizes (in)	Thickness .050 Width 1 1/2 Length 19'4				
Blade Speed (ft/min)	33~330				
Max. Programs	99 (length/piece)				
Motor Output (HP)	Saw Blade 5 Hydraulic 1 Work Feed 1 Front Vise 1/2 Else 11/64				
Power Consumption (A)	23 (AC208V)				
Machine Weight (lbs)	6,170				
Standard Accessories	Saw Blade 2pc. Tool 1set				

Specifications are subject to change without notice.

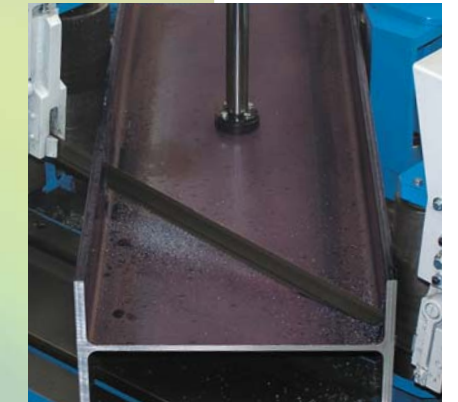
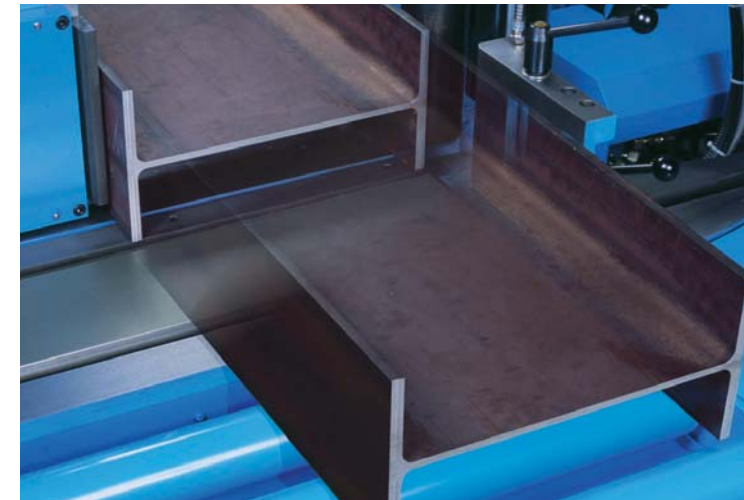
## OVERALL DIMENSIONS (in)



# BAND SAWING MACHINE

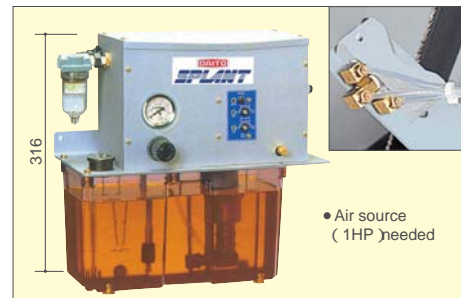
for structural steel

## STA 5080



## OPTIONS

### MIST APPLICATOR



• Air source (1HP) needed

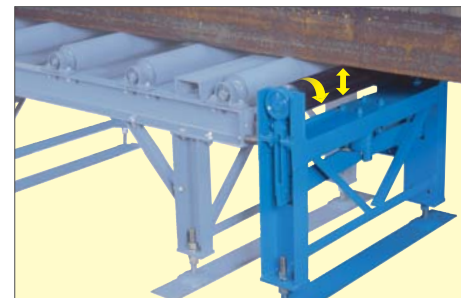
Clean cutting environment is enabled with the mist applicator which sprays cutting fluid to saw blade edges.

### WISE PRESSURE REGULATOR



Vise pressure can be adjusted for thin wall material.

### POWERED ROLLER



This unit is linked to a roller table to feed the workpiece.

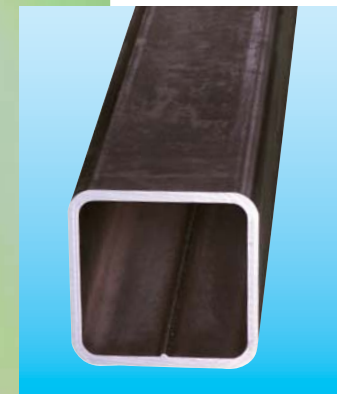
### ROLLER TABLE (Light duty)



### ROLLER TABLE (Heavy duty)



## NC INDEXING + MITER CUT



## DAITO U.S.A., INC.

1470 Elmhurst Road, Elk Grove Village, IL 60007

TEL 847-437-6788 FAX 847-437-6789

<http://www.daitousa.com>

